

NEW-QUALITY LOADER

FOR USE WITH THE

FORDSON

TRACTOR

WITH VALVE

SYSTEM

AND OPERATING

INSTRUCTIONS

MANUAL

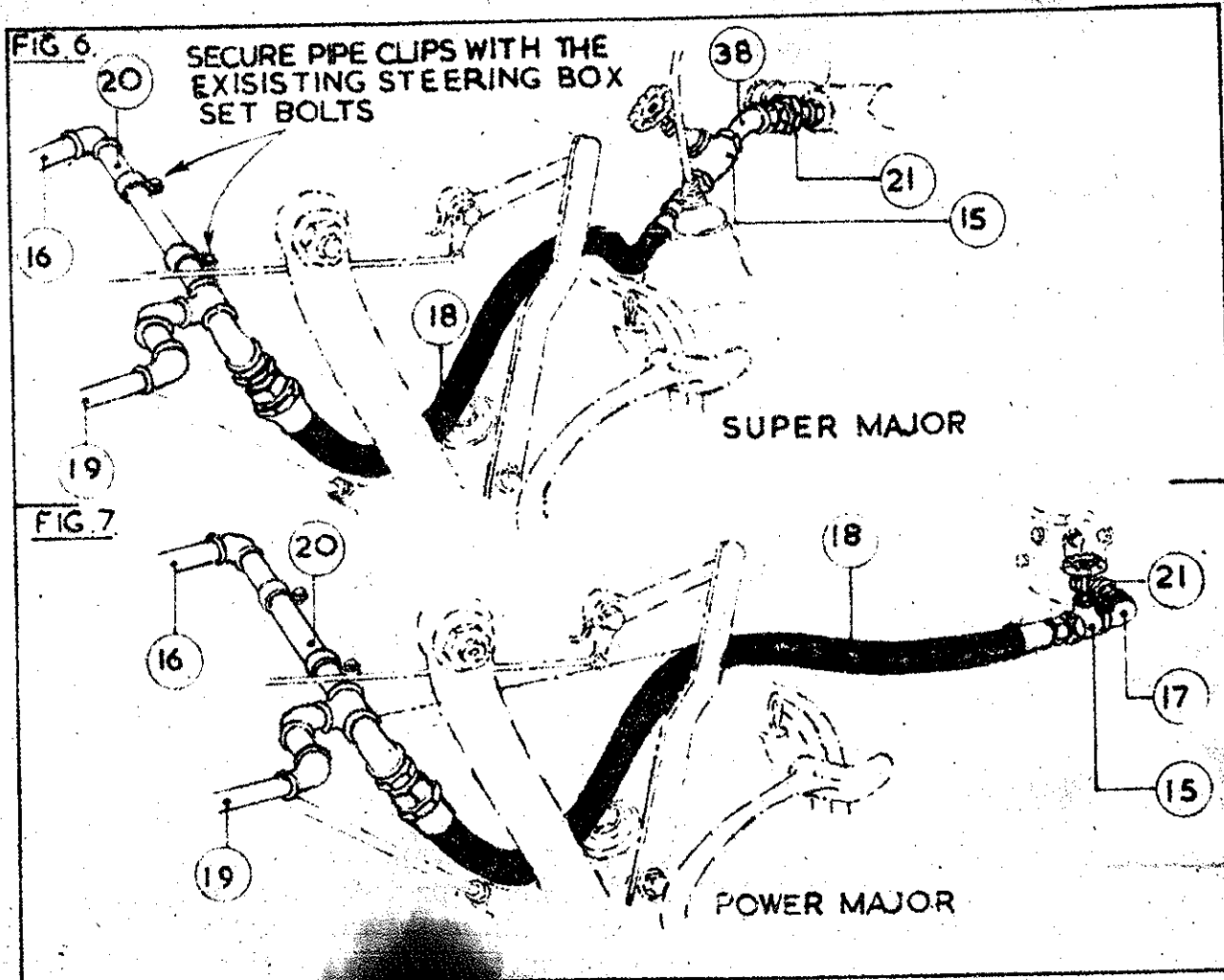
FOR THE

NEW-QUALITY

LOADER

FOR USE WITH THE

FORDSON



12) FORDSON MAJOR AND FORDSON POWER MAJOR PIPEWORK

The previous instructions should be followed with the exception of the fitting of the steering box, item 38, which should be discarded and the 90° Elbow fitting, item 17, in place of it (fig. 7).

NOTE

FORDSON MAJOR TRACTOR

The rear wheel on both sides will have to be removed and replaced with the rear wheel, item 39.

It is recommended that all tractors be fitted with a down swept wheel for the toolbox to side mounting angles.

Check all pipes to see that they are secure and all bolts and nuts to see that they are tight.

OPERATION OF LOADER

Is by finger tip control lever as used for rear linkage. The isolation valve is fitted for independent use of rear linkage.

BLEEDER PLUG

Each cylinder is provided with a bleeder plug (Fig. 5) for release of trapped air. Raise Loader 6" and carefully loosen plug.

CAUTION - DO NOT REMOVE PLUG until all air is exhausted. Then re-tighten.

CARE OF LOADER

Lubricate all moving parts twice daily using any clean medium grade oil. When the cylinders are removed, plug the inlet to prevent entry of foreign matter which may, when the cylinders are again installed, seriously damage the hydraulic system. The hoses may be in position providing the ends are plugged and the hoses secured to the side channels. The isolation valve must remain closed when the hoses are disconnected.

The angle support fixing bolts should be checked after one hour's working and occasional checking is a must to prevent damage to the tractor and loader.

Hydraulic System: Dirt is the greatest enemy of the system. Always take the same precaution when installing the system as you would the fuel line of your tractor. The hydraulic oil is supplied with oil from the rear axle, therefore always use the same grade of lubricant specified by the tractor manufacturer. Check the oil level before refilling the rear axle.

FIG. 1.

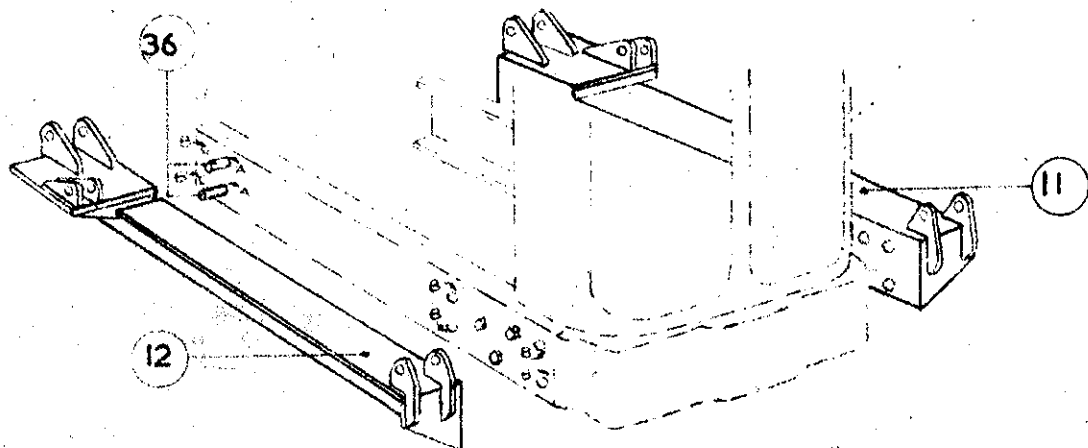
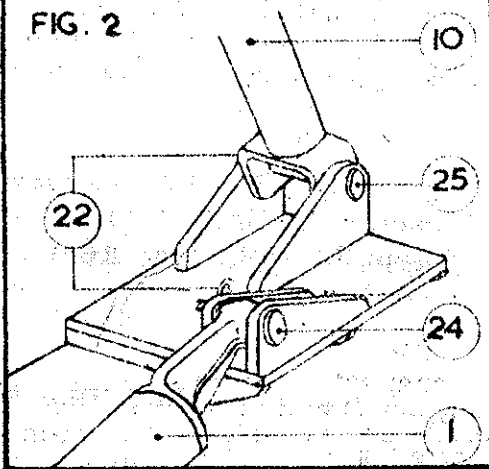
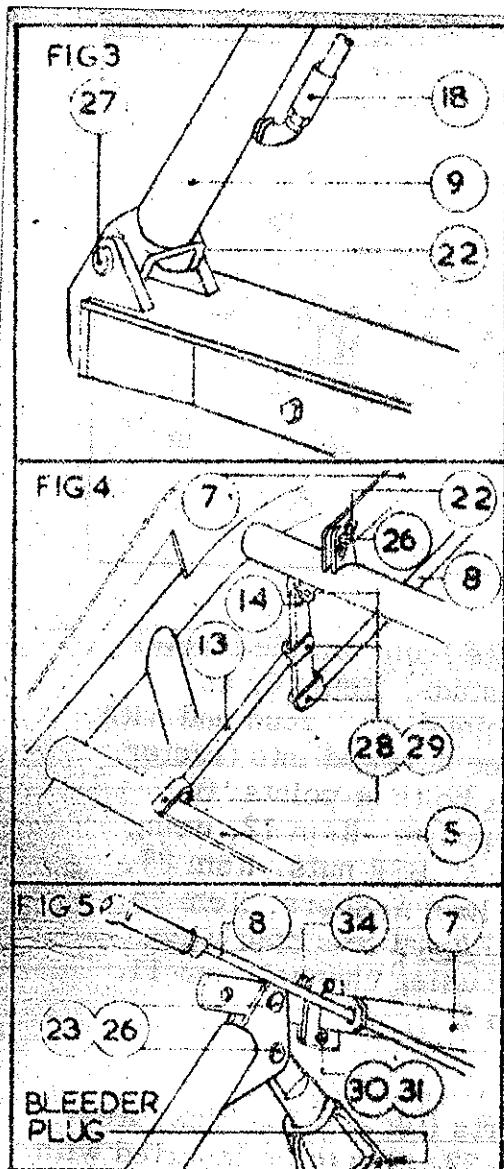


FIG. 2



- 1) Remove two bolts from offside tractor channel and fit studs, item 36, as illustrated at points 'A'. Stud end with UNC thread to be screwed into tractor. Now remove six bolts at points 'B' and fit angle supports, item 12, using bolts, item 33, $\frac{1}{2}$ " BSF nuts, item 37, (for studs) and lock washers, item 35, through-out. Repeat this operation on the nearside using channel item 11. See Illustration 1.

- 2) Attach radius arms, item 10, to the angle supports (fig 2) using pins, item 25, and secure with clips and chain, item 22, pins to be inserted with points facing towards tractor.
- 3) Attach cylinder, item 27, to the angle supports (fig. 3) using pins, item 27, and secure with clips and chains, item 22.
- 4) Attach radius arms, item 26, to the angle supports (fig 5) using pins, item 26, and secure with clips and chains, item 23, pins to be inserted with points facing towards tractor.
- 5) Attach frame, item 1, to angle supports (fig. 2) using pins, item 24, and secure with clips and chains, item 22, pin points to face towards the tractor.



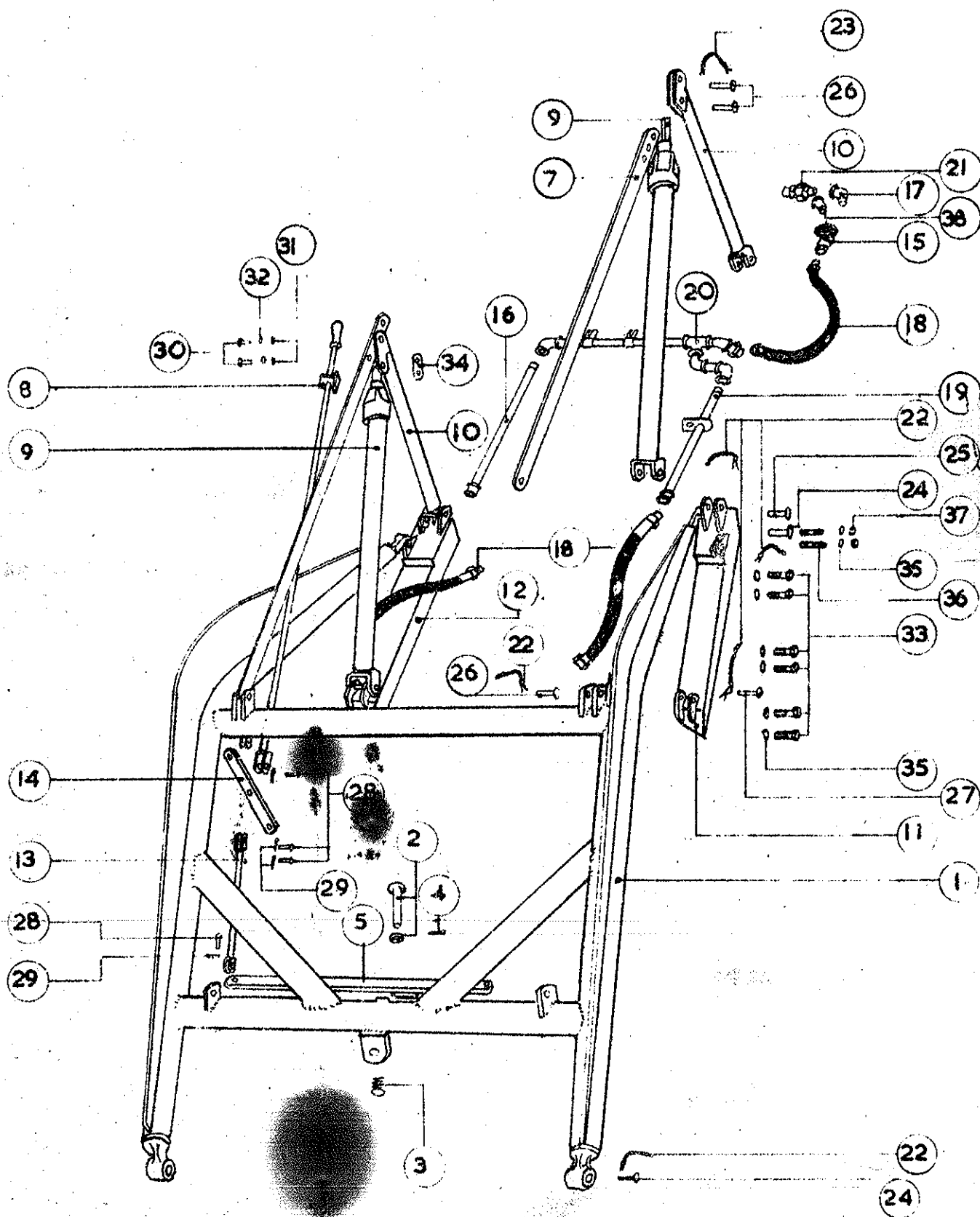
- 6) Attach lift bars, item 7, to radius arms with pins, item 26, and secure with spring clips and chains, item 23, referred to in note 4 (fig. 5). Fit other ends of lift bars to frame using pins, item 26, and secure with spring clips and chains, item 22 (fig. 4).
- 7) Fit link, item 14, to lug on underside of frame cross member and secure with pin, item 28, and split pin, item 29 - holes at $3\frac{1}{4}$ " crs. to be at top (fig. 4).
- 8) Fit short trip rod, item 13, to cross arm, item 5, and link, item 14, and secure with pins, item 28, and split pins, item 29 (fig. 4).
- 9) Attach trip rod, item 8, with handle cranked towards seat of tractor, to link, item 14, and secure with pin, item 28, split pin, item 29 (fig. 4).
- 10) Attach trip rod guide and guide flat, item 34, to the R.H. lift bar (fig. 5) using bolts, item 30, nuts, item 31, and washers, item 32.

11) FORDSON SUPER MAJOR PIPEWORK

Loosen steering box set bolts indicated in Fig. 6. Assemble pipework assembly, item 20, through tractor and tighten steering box set bolts. Fit pipe clips. Screw pipework item 16, into right hand side of pipework assembly. Fit pipework, item 19, into left hand side. Attach pipe support to engine using existing screw. Fit male ends of rubber hoses, item 18, to sockets on pipes, item 16 and 19, and female ends to cylinders, item 9 (fig. 3). The hoses should lay along the tractor side channels - the left hand hose being positioned to avoid damage from the exhaust pipe.

Screw male end of rubber hose, item 18, into valve, item 15, and 45° Elbow, item 38, into other side of valve. Loosen union assembly, item 21, and screw taper thread side into female end of 45° elbow. Connect parallel thread of union assembly, item 21, to external hydraulic tapping using existing screw, washer and tighten union (Fig. 6).

Jointing compound should be used on pipework joints to prevent the seepage of oil through the joint.



SPARE PARTS AND PACKING LIST.

NOTE: When ordering spare parts please quote part numbers of all items required.

Ref. No.	Part Number.	Description.	Qty.	Packing Ref.
1	FRD-1	Frame Welding Assembly	1	A
2	AC-88	Latch Pin and Collar	1	A
3	AC-96	Latch Pin Spring	1	A
4	SP.8-20	Split Pin $\frac{1}{4}$ " x $2\frac{1}{2}$ "	1	A
5	FRD-6	Cross Arm Lever	1	A
6	SP.5-12	Split Pin $\frac{5}{32}$ " x $1\frac{1}{2}$ "	1	A
7	FRD-8	Lift Bar	2	A
8	FRD-85	Trip Rod Assembly	1	A
9	FRD-192	Cylinders	2	A
10	FRD-31	Radius Arms	2	C
11	FRD-77	Angle Support L.H.	1	C
12	FRD-78	Angle Support R.H.	1	C
13	FRD-10	Trip Rod	1	C
14	FRD-20	Link	1	C
15	FRD-89A	Valve	1	C
16	FRD-167	Pipework	1	C
17	ST.7-2	$\frac{1}{2}$ " BSP. 90° M-F Elbow	1	C
18	ST.11-5	Rubber Hose	3	B
19	FRD-195	Pipework	1	C
20	FRD-222	Pipework Assembly	1	C
21	FRD-223	Union Assembly	1	C
22	AC-102	Single Spring Clip and Chain	10	B
23	AC-103	Double Spring Clip and Chain	2	B
24	ST.1-1	Taper Point Pin $3.1/16$ " long	4	B
25	ST.1-2	Taper Point Pin $5.3/16$ " long	2	B
26	ST.1-5	Taper Point Pin $2.1/16$ " long	6	B
27	ST.2-5	Flat Point Pin $4\frac{3}{4}$ " long	2	B
28	AC-98	$\frac{3}{8}$ " Pin	4	B
29	SP.4-8	Split Pin $\frac{1}{8}$ " x 1"	4	B
30	WB.104-8	$\frac{1}{4}$ " Whit. Bolt 1" long	2	B
31	WN-104	$\frac{1}{4}$ " Whit. Nut	2	B
32	GW.4	$\frac{1}{4}$ " Washer	2	B
33	FRD-60	Bolt $\frac{1}{2}$ " x $1\frac{1}{2}$ " long	12	B
34	AC-87	Guide Flat	1	B
35	ITW-8	Lock Washer	16	B
36	FRD-203	Stud	4	B
37	FN-108	$\frac{1}{2}$ " BSF Nut	4	B
38	ST.33-1	$\frac{1}{2}$ " BSP 45° M-F elbow	1	B
39	FRD-224	Bonnet Handles	2	B

PACKING REF:

A Assembled with Frame
B In Linen Bag
C In Crate

EXPORT ENQUIRIES TO:

STEEL FABRICATORS (CARDIFF) LTD.,
Pengam Road, Roath, Cardiff.

Telephone Cardiff 37212/9

Telegrams Steelfab Cardiff

Jointing comp-
seepage of oil through the joint.